

BAGLIETTO PRESENTS

T60 HYBRID Owner's deck

THE LATEST MASTERPIECE OF BLUE





Baglietto T60 HYBRID



Baglietto T60 HYBRID



**An
Indefinable
harmony.**





T 60 HYBRID

Impressive volume and outstanding exterior areas characterized this 60-meter yacht designed by **Francesco Paszkowski**.

The yacht – below 1200 GT – can be equipped with an optional **hybrid propulsion system** that will allow to choose a more efficient navigation mode, reducing both costs and environmental impact.

When cruising in diesel-electric mode, the **T60 Hybrid** has a range of up to 7,000 nm and will be able to remain at anchor up to 12 hours relying on the batteries only. Her two CAT C32 engines, however, allow her to **reach a maximum speed** of 16 knots and a range of 5,500 nm at 12 knots.



Length overall

60.6

METRES // 199 FT

Beam

11.0

METRES // 34 FT

Top Speed

16

KNOTS

GRT Under

1200

ton

Cruise Speed

12

KNOTS

Engine

CAT C32

ACERT

2 x 1193 kW @ 2300 rpm

Guest

12

IN 6 CABINS WITH

14

CREWS IN 7 CABINS

Range up to

5,500

NM DIESEL MODE

Range at 12 knots

7,000

NM WITH DIESEL MODE

(Optional Hybrid System)



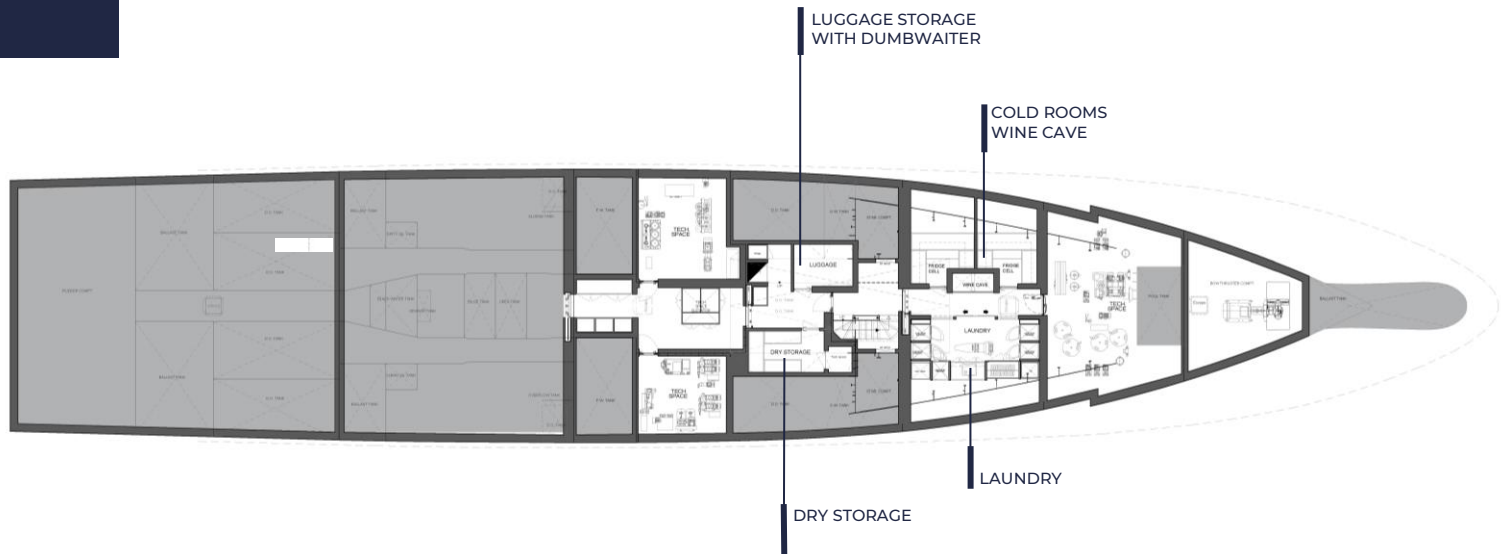


Baglietto, T60 HYBRID



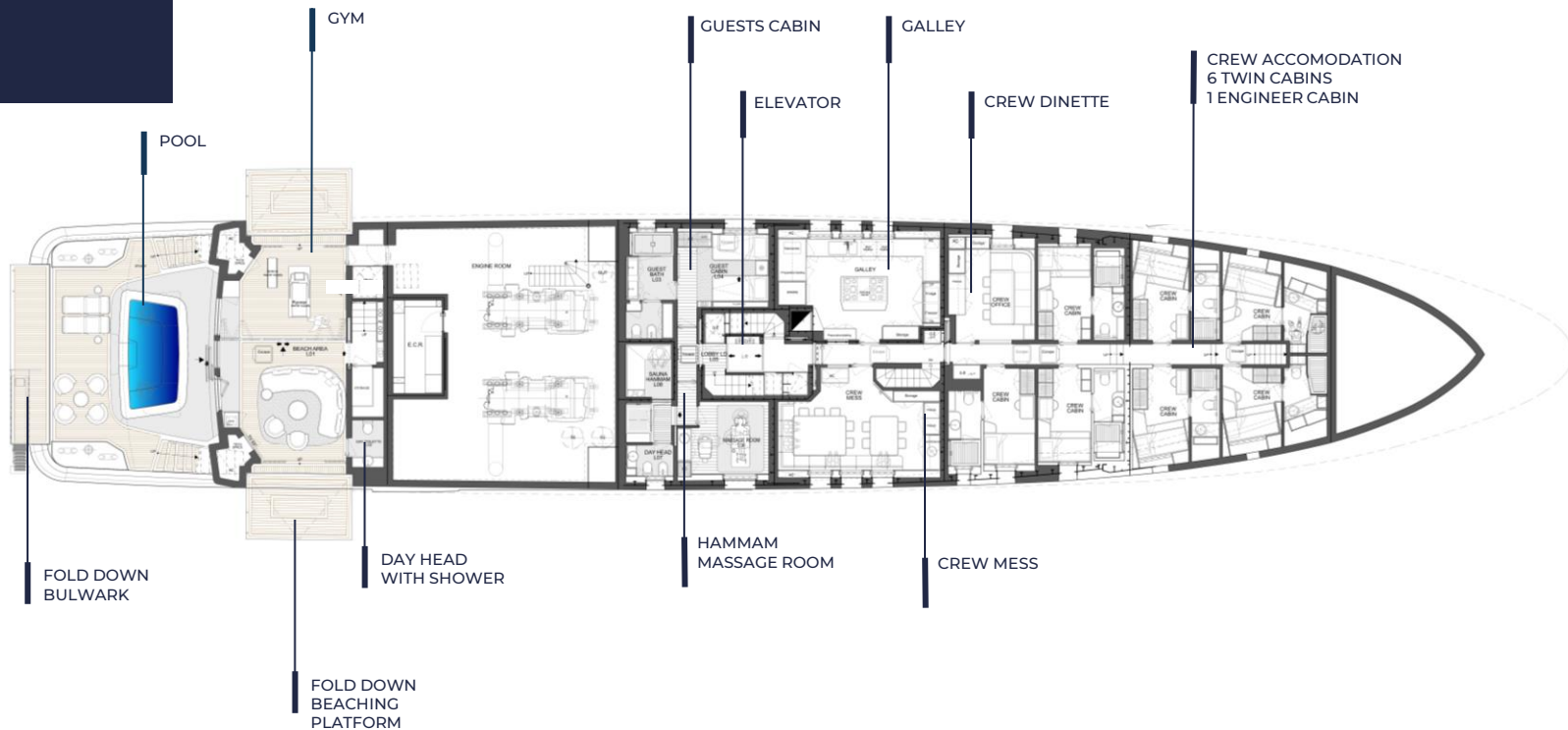


UNDER LOWER DECK



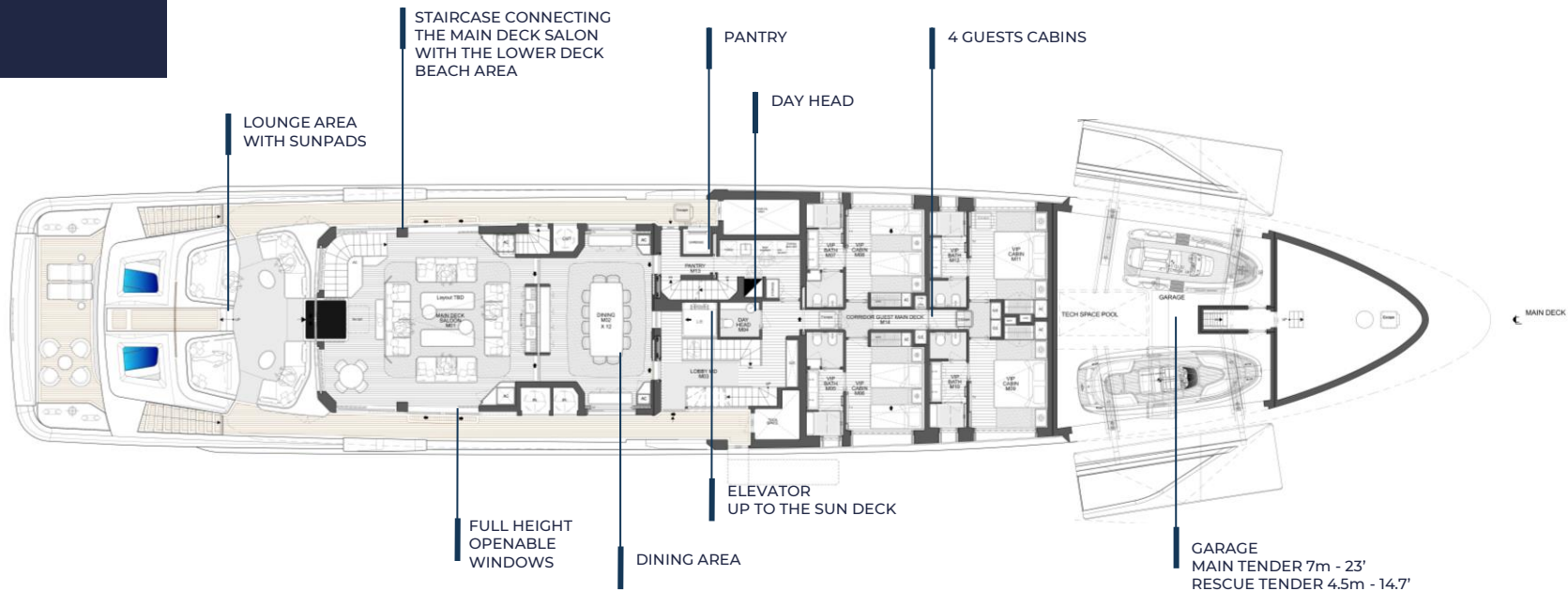


LOWER DECK



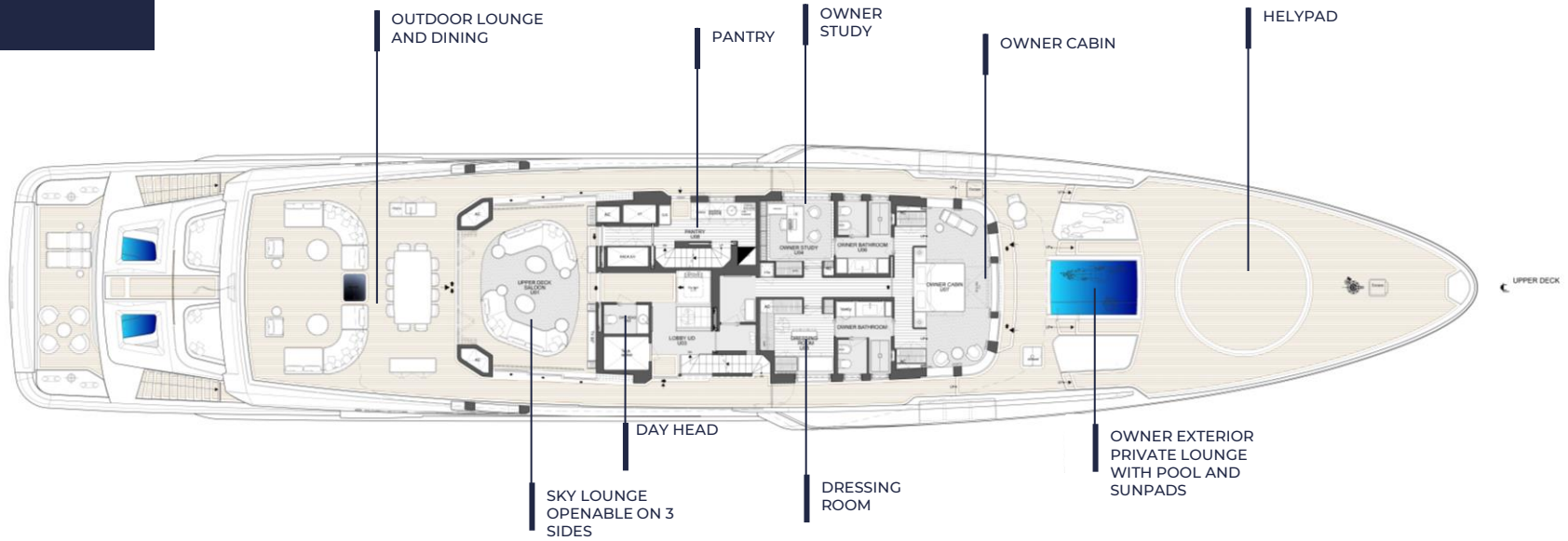


MAIN DECK



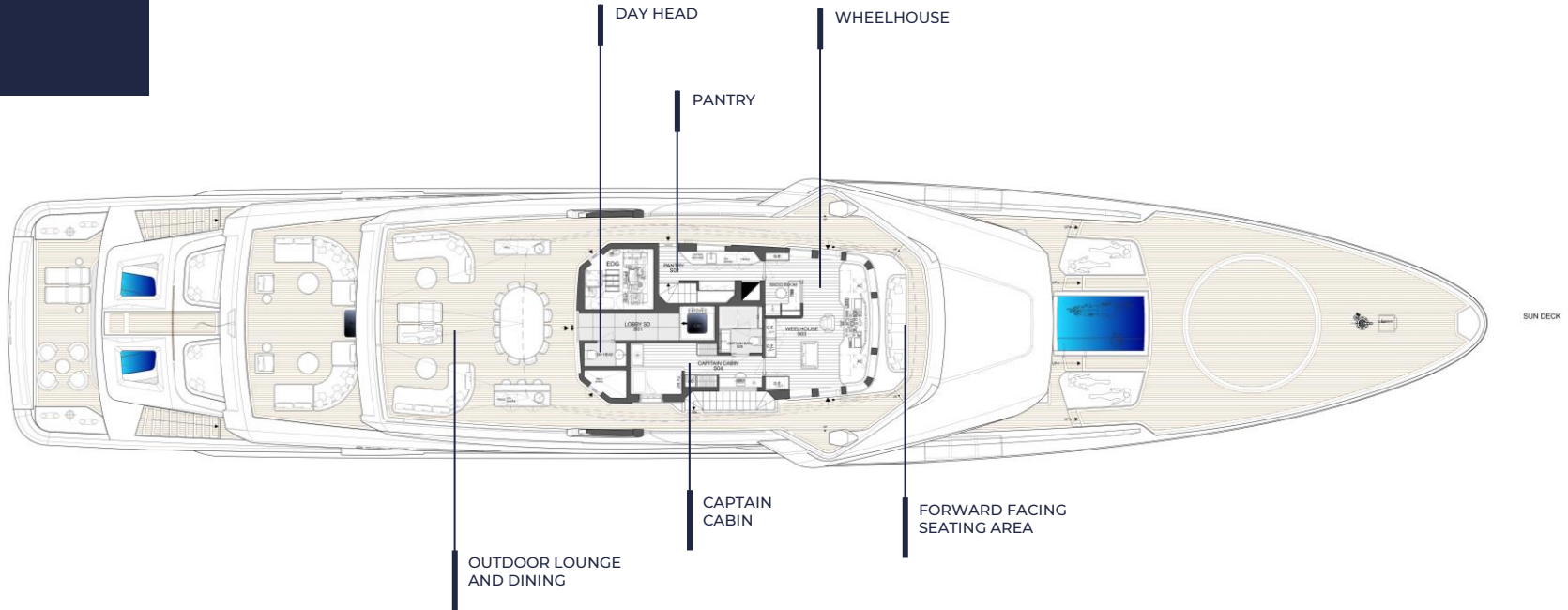


UPPER DECK





SUN DECK





**FORWARD OWNER
LOUNGE AREA**





**FORWARD LOUNGE
AREA**

HELYPAD



DESIGNER
FRANCESCO PASZKOWSKI

NAVAL ARCHITECT
PLANA Design & NAV.ARS

MATERIAL
STELL HULL
ALUMINIUM
SUPERSTRUCTURE

MAIN DIMENSIONS

LOAD
60.60 M - 199'

MAX BEAM
11.00 M - 34'

DRAFT
2.90 M - 9.5'

GROSS TONNAGE
BELOW 1200 GT

PROPULSION PACKAGE

MAIN ENGINES
2 x CAT C32 ACERT2 x 1193 kW @ 2300 rpm

PROPULSION
SHAFT LINE WITH FIXED PITCH PROPELLER

TOP SPEED
16.0 kn

CRUISING SPEED
12.0 kn

RANGE AT 12,0 KNOTS 5,500 nm
(DIESEL MODE)

HYBRID PACKAGE

MAIN GENERATORS
2 x 250 ekW Siemens Energy, variable speed

NIGHT GENERATOR
1 x CAT C7.1 118 ekW

ELECTRIC ENGINES /SHAFT GENERATORS
2 x 200ekW, liquid cooled

LITHIUM ION BATTERY PACK OPTIONS:
8 x 98 kWh Akasol 9 AKM, liquid cooled

CLASS: Lloyd's Register □ 100 A1 SSC, Yacht,
Mono, G6, MCH Hybrid Power



Baglietto T60 HYBRID

